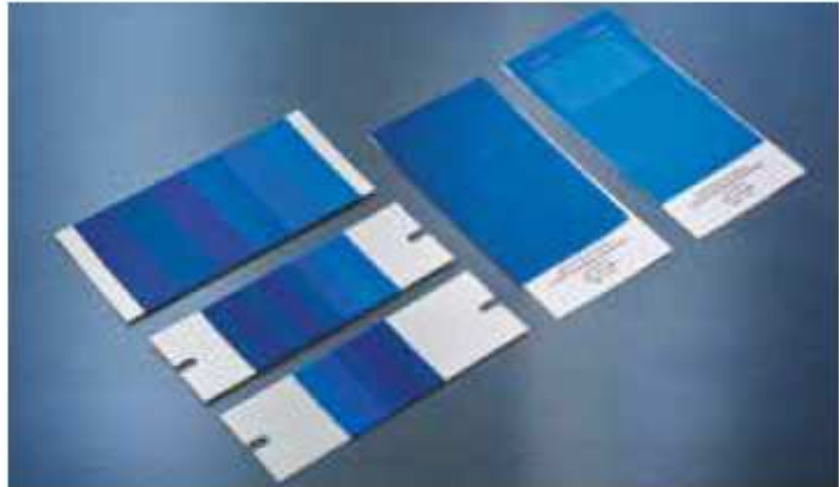


Blue Wools

Blue wools are used for light and weathering fastness testing.

They are individually dyed wool pieces, each with a different degree of fastness to light.



We supply Blue Wools in pieces or in strips bonded to card to accommodate your preferences. We can develop bespoke cards to meet your exact needs.

European

Our 'European' Blue Wools Standards (ISO 105-B08) originate from DEK. This German

organisation holds the global master standard for Blue Wools and every batch produced is checked for compliance before it is released.

American

The corresponding American Blue Wools originate from AATCC.

Code	Blue Wools – European
766-310	ISO Blue Wool Standards Nos. 1 - 8 - per set (8)
766-820	ISO Blue Wool Standards Nos. 1-8 [pre-mounted 10mm wide strips on card] - per pack (10 cards)
Code	Blue Wools and Fading Standards – American
766-516	AATCC Lightfastness Standard L-2 - per pack (50 x 75cm)
766-517	AATCC Lightfastness Standard L-4 - per pack (50 x 75cm)
766-521	AATCC Standard of Fading for L-2 - each
766-522	AATCC Standard of Fading for L-4 - each

Please see Product Codes on pages 14 - 22 for a more comprehensive list of the test materials that we offer.

TruFade Xenon arc light fastness tester

TruFade makes life simpler by bringing a totally fresh approach to light fastness testing.

The convenient height, the wide opening chamber and the superb software add up to a machine designed for you.

